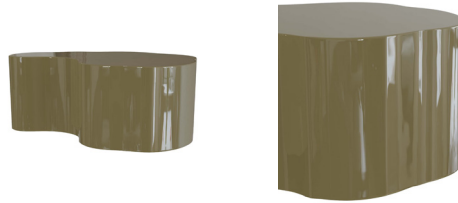
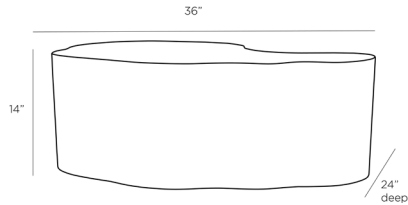


# ARTERIOS

## MEADOW COFFEE TABLE



5776

H: 14 IN, W: 36 IN, D: 24 IN

Moss

Contract Suitable As Is

Imagine a functional table with both elevated looks and unique charm. Wonderfully playful curves dance around the entire structure of this coffee table, softening its skilled lacquered craftsmanship. Look closely and discover a rich moss finish, with striking elements of the hand-made-such sophistication!

### APPEARANCE

|                  |            |
|------------------|------------|
| Material         | Fiberglass |
| Material Type    | Lacquer    |
| Finish           |            |
| Top Coat/Sealant | false      |

### DIMENSIONS

|            |                    |
|------------|--------------------|
| Foot Print | W: 36 IN, D: 24 IN |
|------------|--------------------|

### SHIPPING

|                       |                                    |
|-----------------------|------------------------------------|
| Shipping Requirements | TruckShip                          |
| Product Weight        | 40.5 LBS                           |
| Gross Weight 1        | 65 LBS                             |
| Shipping Box 1        | H: 39.7 IN, L: 28.3 IN, W: 19.2 IN |

### ADDITIONAL INFO

|                         |           |
|-------------------------|-----------|
| Leg Or Foot Application | Felt Pads |
| Swatch Number           | MLSW      |

### CONTRACT

|                   |      |
|-------------------|------|
| Contract Suitable | true |
|-------------------|------|