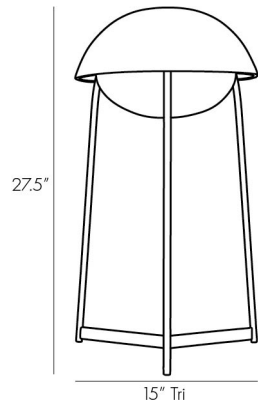


ARTERIOS

GLAZE LAMP

WORKSHOP



DA49000

H: 27.5 IN, W: 15 IN, D: 15 IN

Blackened Steel, Ivory Stained Crackle Ceramic

Contract Suitable As Is

From a frosted glass opal light nestled within an ivory stained crackled ceramic bowl shade, the Glaze Table lamp casts a warm, diffuse glow to highlight surfaces below. Perched on a blackened steel tripod base, the Glaze Table lamp effortlessly combines warm, crafted finishes and modern forms to dramatic effect.

APPEARANCE

Material	Ceramic, Glass, Steel
Material Type	Frosted
Finish	Blackened Steel, Ivory Stained Crackle, Opal
Finish Will Vary	true
Top Coat/Sealant	false

DIMENSIONS

Foot Print	W: 15 IN, D: 15 IN
------------	--------------------

WIRING

Rating	Indoor Only
Tilt Test	8 Degrees - UL
Cord	8 FT, Back of Lamp Base, Black Cloth, SPT-2
Socket	1, Black, Type A - E26
Switch	On Line, On/Off Rocker
Maximum Watt	60
Voltage	110-120 V

CERTIFICATIONS

Certifications	Mexico United Arab Emirates, United Kingdom, United States, Canada
----------------	---

COMPLIANCY

UL/ETL	Yes
CB	Yes
RoHS	true

SHIPPING

Product Weight	11.8 LBS
Gross Weight 1	17.8 LBS
Gross Weight 2	0 LBS
Shipping Box 1	H: 36.5 IN, L: 17.5 IN, W: 17.5 IN
Shipping Box 2	H: 0 IN, L: 0 IN, W: 0 IN

CONTRACT

Contract Suitable	true
-------------------	------